

Newsletter 3

08.10.21



Challenge, Equality & Opportunity

COVID-19 Update

Thank you yet again for your support and patience with testing, symptoms and all of the other aspects of COVID-19 which we are now part of our daily practice. We have really felt the impact of staff absence in school over the past two weeks and I am grateful, as always, for having such a supportive staff team who rise to the challenge and make the impossible possible! We are still acting with caution, as advised by PH and the LA, and this has resulted in staff and pupils having PCR tests when symptomatic or unwell. I would like to think that this approach has contributed to keeping the number of cases low in school and we will continue to do all that we can while running school as close to 'normal' as possible.

PSHE Consultation

As you are aware, all primary schools are now required to teach Relationships Education as part of our Personal Social and Health Education. The requirement to implement this part of the curriculum has been extended to autumn 2021 (from autumn 2020 due to COVID-19). Consulting with parents and carers is part of the required process in implementing the changes to the curriculum and we have waited for as long as possible to start this process, in the hope that we would be able to do this 'face to face' in school. However, it is not yet safe to invite large groups into school and so we are unable to hold a meeting and present this information in person. As an alternative, Miss Campbell has prepared a PowerPoint presentation (attached) which contains all of the information that we think you need in order to help you to understand some of the changes to the PSHE curriculum at Broadway East. We have also attached the most recent PSHE policy which gives more information about our curriculum and links to the DfE guidance. These changes are small but important in supporting children to manage growing up safely and being healthy in modern Britain. We are interested in your views and we acknowledge that the best educational outcomes for children are achieved when we work together.

When you have viewed the PowerPoint presentation, we would be grateful if you could complete the questionnaire on ParentMail (PSHE Consultation) by Friday 22nd October 2021. Your feedback will be shared with staff and governors and we will make sure that any emerging issues are addressed and responded to.

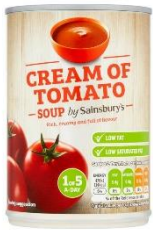
Information and Reminders

Coffee Morning Presentations

Thank you to those of you who have viewed the coffee morning videos and submitted a response. The feedback from parents and carers was extremely positive and useful. A small number of people asked

for further information and these questions have been passed on to teachers. If you have not yet had a response then you definitely will soon!

Harvest



Just a reminder that we still hope to go ahead with the Y4 Harvest on **Friday 22nd October at 2.45pm**. One parent or carer from each family with a child in Y4 is welcome to attend.

All children can start to bring food (eg. tins, packets, jars) in for our collection from **Monday 18th October**. Thank you.



Parents' Evenings

Parents' Evenings will take place on Monday 8th and Tuesday 9th November. We are currently planning for these to take place in person in classrooms where we can create space between staff and parents/carers. You will receive further information on ParentMail next week about booking your appointments.

Parking Around School

Last week, a local resident sent us pictures of a car parked on the pavement. The car was parked at an angle in a very small space and was blocking the path to pushchairs, wheelchairs and anyone with mobility difficulties or visual impairment. It was also making the pavement and the road much more dangerous for everyone else, including young children. We were told that the car belonged to one of our families and I have since been told that this was not a 'one-off' and that this happens regularly. We fully understand the stress of trying to get to school and work on time and we know that the parking opportunities around school are very limited. However, there is no excuse to park irresponsibly, dangerously or illegally on the school run. If you need to drive, we advise leaving the house slightly earlier, parking a little bit further away from school and walking for the last five minutes of your journey into school.

We have asked the LA to support us with this ongoing problem and we hope that the patrol car will be able to visit our site more frequently. We are also waiting to hear from the Three Mile Inn after asking if parents and carers can use their carpark on the school run.

To those of you who continue to travel to school safely and responsibly, by foot, bike, scooter or car, THANK YOU.

New Build Update



Work is progressing as planned and the building continues to change quickly. We now have plastered walls in many places and the doors and windows are being fitted. We will continue to keep you up to date.

We hope that you all have a lovely weekend. Here are some pictures of what we love most in school – happy children learning and playing!

Best wishes

Helen McKenna
Headteacher

